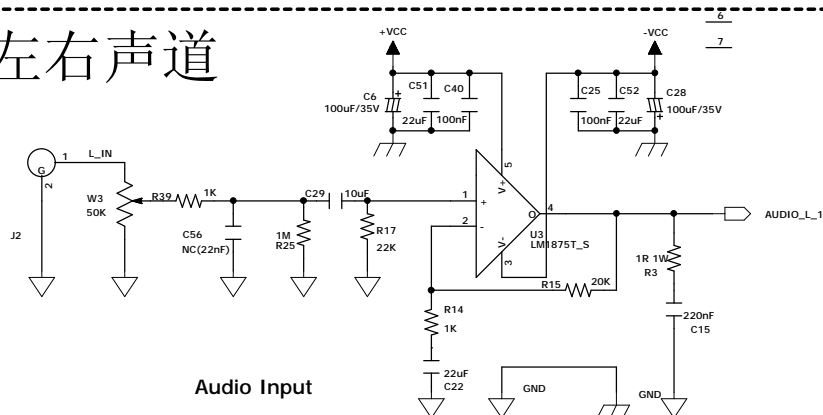
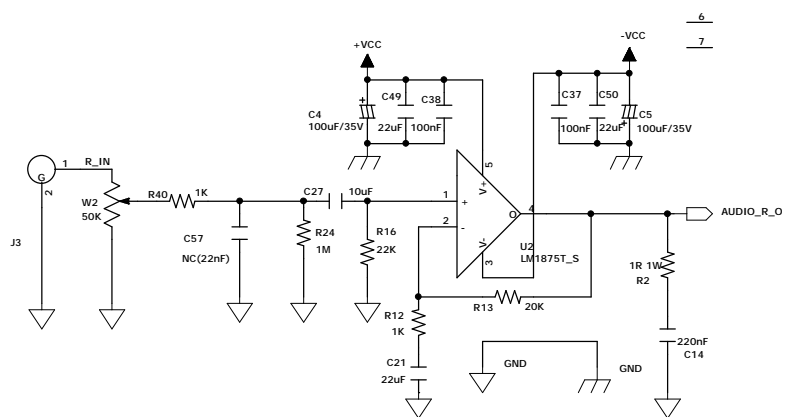


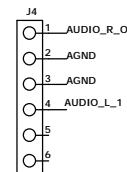
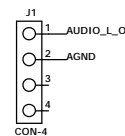
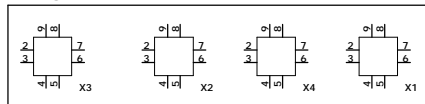
## 左右声道



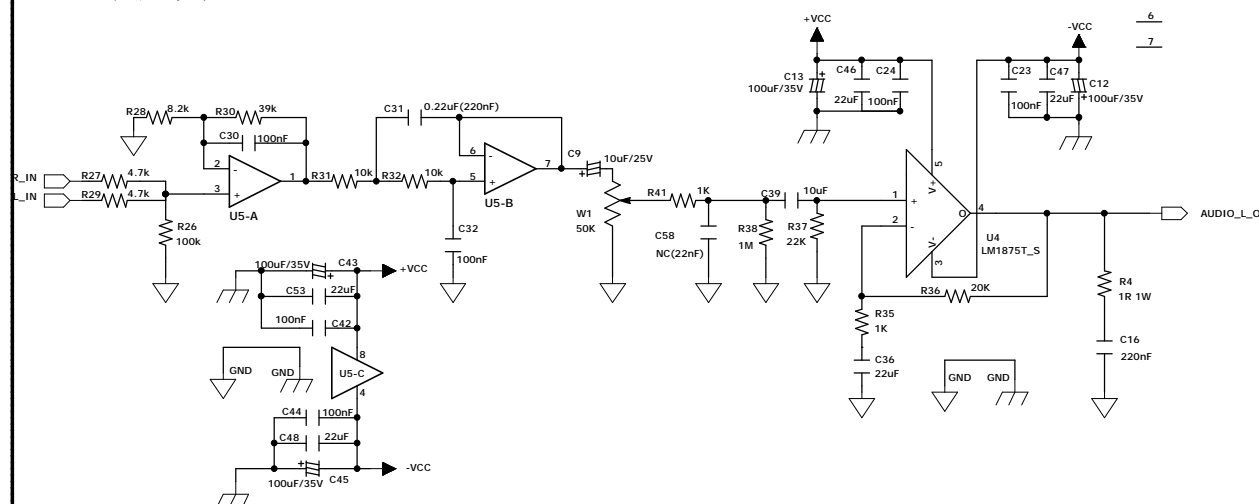
Audio Input



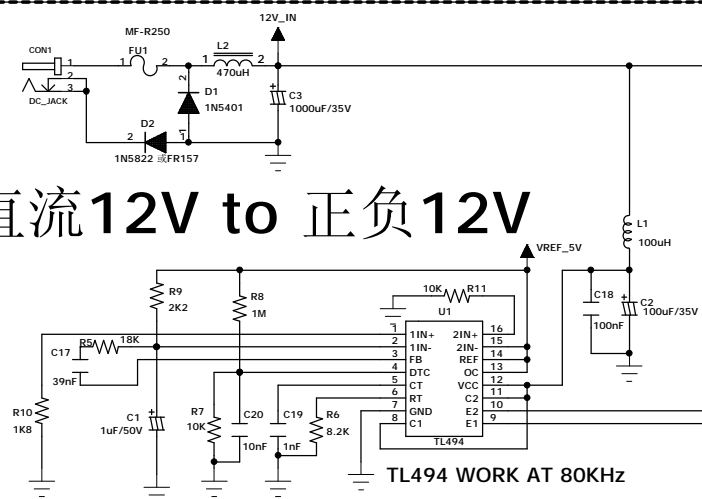
## HOLE



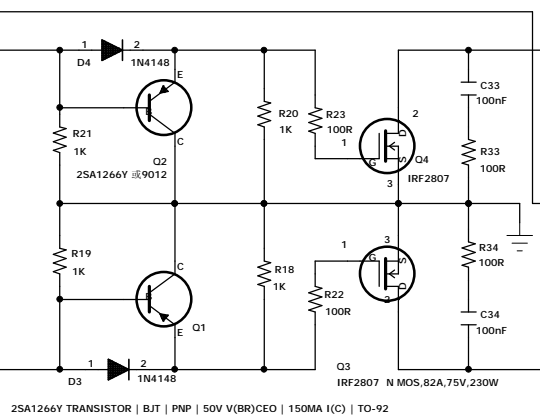
## 重低音



## 直流12V to 正负12V

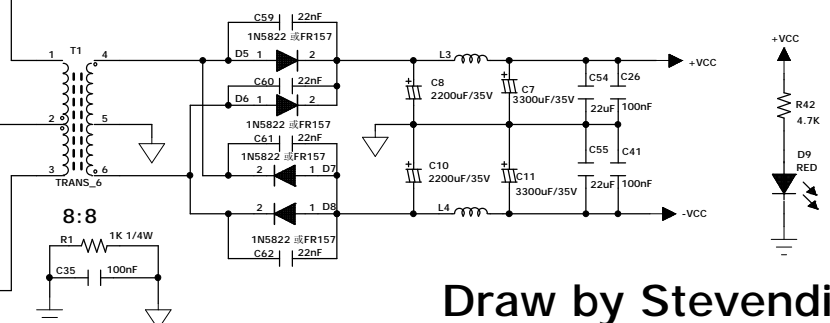


TL494 WORK AT 80KHz



2SA1266Y TRANSISTOR | BJT | PNP | 50V V(BR)CEO | 150mA I(C) | TO-92

高速管对低频的弹跳力；中高音的通透，音场的定位有一定的正面作用的，甚至可以每臂多管并联以降低电源内阻



Draw by Stevendif  
2011-1010